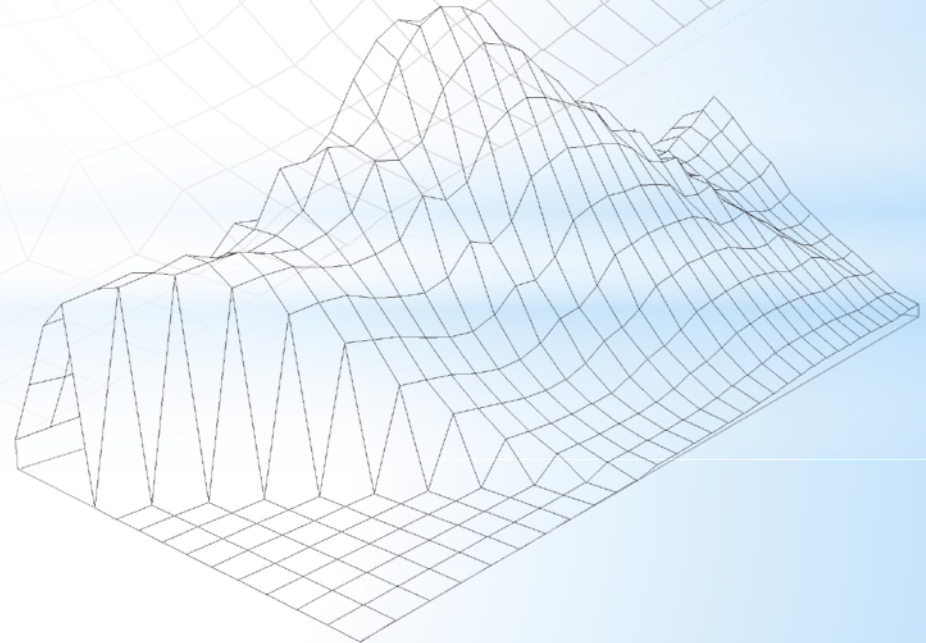


City Council Election District Boundaries Three Draft Plans – Six Council Districts

City of Santa Clara

Jeanne Gobalet, Ph.D.
Lapkoff & Gobalet
Demographic Research, Inc.
www.Demographers.com

July 3, 2018, Public Hearing



Agenda

- * **Districting criteria used by demographers**
- * **Relevant demographic data for the City as a whole**
- * **Computer mapping data (“layers”) used when drawing election districts**
- * **Background maps**
- * **Three draft plans for 6 Council districts**
- * **Questions?**

Districting Criteria used by Demographers

- **Population Equality – Census 2010 data**
- **Federal Voting Rights Act**
- **State Elections Code**
- **Other criteria**

Required Districting Criteria: Population Equality

- **Census 2010 population data must be used in districting (until 2020 Census data are available)**
- **New election districts must be nearly equal in total population:**
 - No more than 10% total deviation using 2010 population
 - Santa Clara's Census 2010 population was 116,468. Each of six City Council districts must contain approximately one-sixth of this total (about 19,411 residents).
 - Population difference between most- and least-populous districts should not exceed 1,941. This is called "total deviation".
 - The City's post-2010 housing and population growth has been geographically uneven. We can take the added estimated population into account to a very limited extent by giving the Council districts with the most growth smaller total populations (deviation must not exceed 10%, however).

Required Districting Criteria: Federal Voting Rights Act

- Election districts should provide members of protected groups the opportunity to elect representatives of their choice (or possibly to influence the election of representatives of their choice)
- Supreme Court decisions (Shaw v. Reno and others) say race cannot be the “predominant” factor in redistricting, unless there is a “compelling state interest.”
- Supreme Court decision (Evenwel et al. v. Abbott, Governor of Texas, et al., 2016) affirmed that *total* population is to be used to balance election districts.

Traditional Districting Criteria

California Elections Code

District lines may be drawn that consider:

- **Topography (e.g., rivers, natural barriers)**
- **Geography (e.g., municipal boundaries)**
- **Cohesiveness, contiguity, integrity, & compactness of territory**
- **“Communities of interest,” which may be:**
 - **Geographic communities (e.g., neighborhoods)**
 - **Socioeconomic groups (e.g., Federal Voting Rights Act protected groups, etc.)**

In addition, when drawing election districts, we try to use major roads and other identifiable features as boundaries.

Further Criteria Emphasized by Courts

- **Respect boundaries of existing political subdivisions, when possible (e.g. voting precincts, etc.)**
- **Respect existing census geography (e.g., city blocks)**
- **Avoid head-to-head contests between incumbents**
- **Other criteria which may address unique local concerns**

Computer Mapping (GIS) Data (“layers”) used by Demographers

- **U.S. Census 2010 blocks** (building blocks for election districts—Census Bureau population data are for these geographical units)
- **Santa Clara County precincts** (used by Registrar of Voters to implement districting plan)
- **GIS layers from the City’s GIS**
 - Streets, parcels...
- **GIS layers from the U.S. Census Bureau**
 - railroads, water features, landmarks...
- **Santa Clara Unified School District attendance area boundaries**
- **Nextdoor neighborhood map**

Demographic measures used in districting (City of Santa Clara totals)

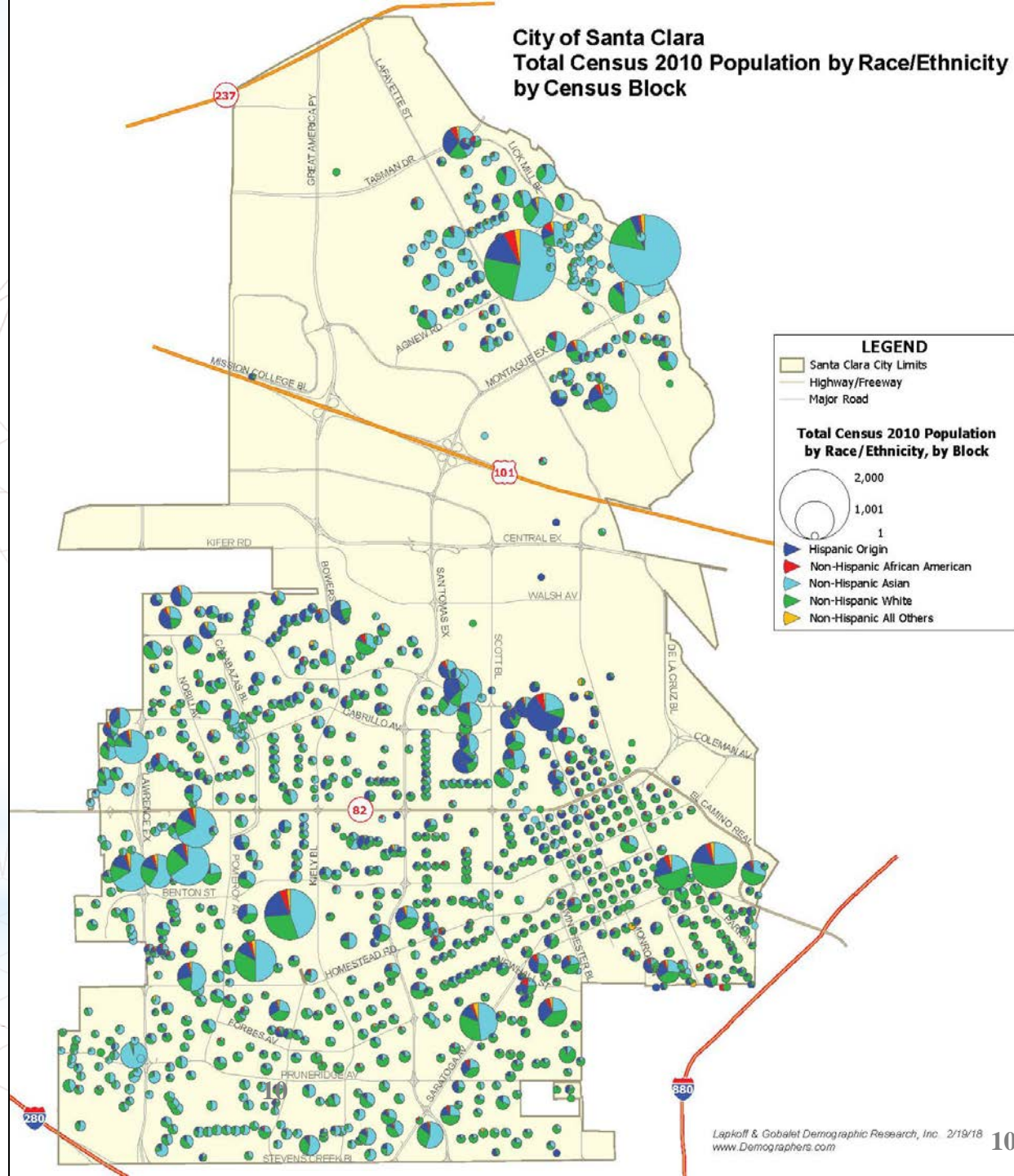
	Census 2010 total population	NH Asian	NH White	Hispanic origin	NH Black	NH Native American AK native	NH Hawaiian Pacific Islander	NH Other race	NH Other mixed race
2010 Census population	116,468	45,681	42,026	22,589	3,334	492	745	420	1,181
Percent		39%	36%	19%	3%	0%	1%	0%	1%
	est total CVAP 2012-16	NH Asian CVAP	NH White CVAP	Hispanic origin CVAP	all Other CVAP				
American Community Survey 2012-16 estimated Citizen Voting Age Population (CVAP)	66,036	19,252	33,644	11,086	2,054				
Percent		29%	51%	17%	3%				

We combine Census blocks (the smallest unit of Census geography) and aggregate block numbers for Pieces (subareas of the City). We use Pieces to develop draft districting plans.

Census 2010 distribution of the City's population by race/ethnicity (by Census block)

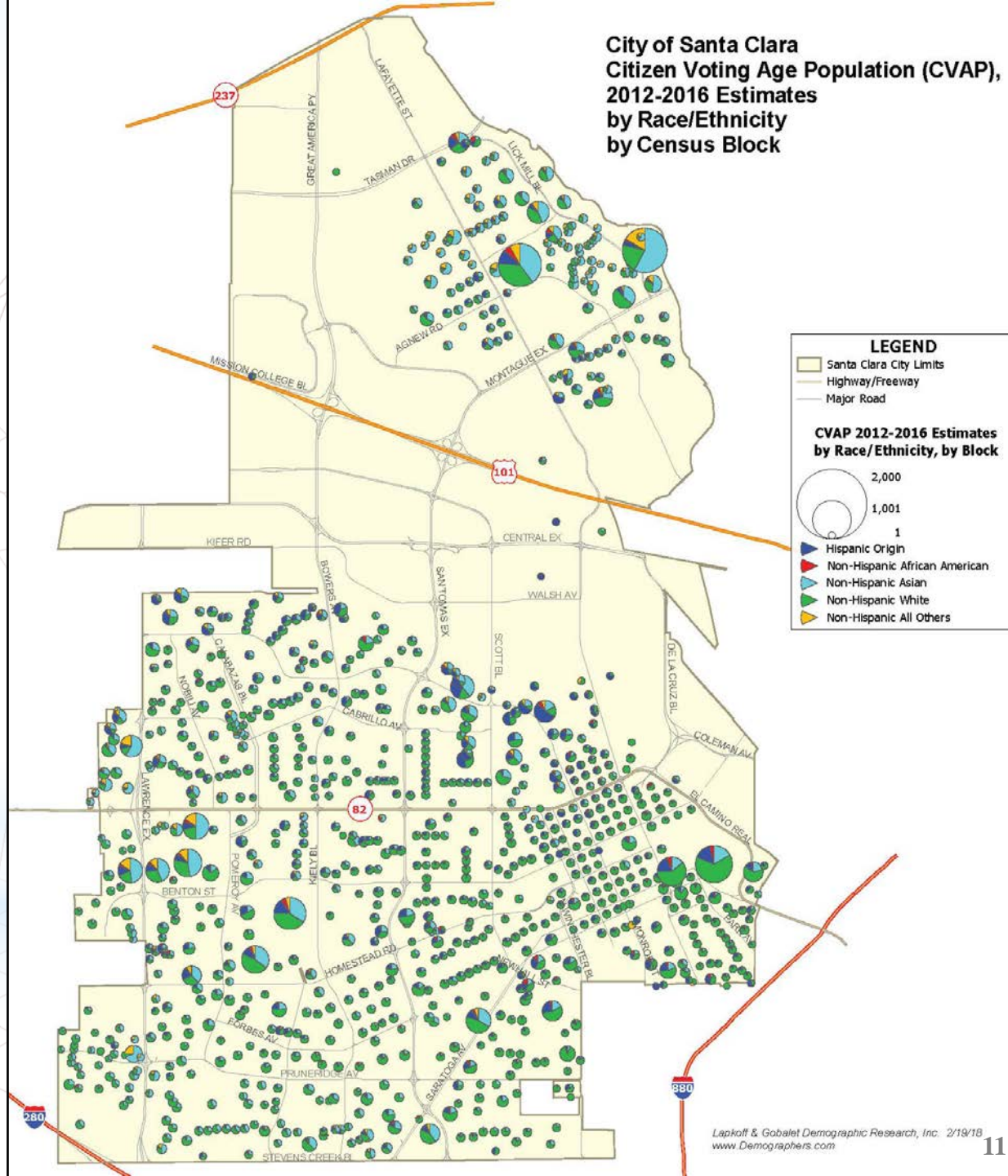
Data from the U.S. Census
2010 Redistricting Data
Release (PL94-171)

Race/ethnic identity is
chosen by Census survey
respondents



Estimated CVAP (Citizen Voting Age Population) by Census Block

City of Santa Clara
Citizen Voting Age Population (CVAP),
2012-2016 Estimates
by Race/Ethnicity
by Census Block



CVAP estimates for Census blocks are from a special tabulation of American Community Survey 2012-16 data by the U.S. Census Bureau. These estimates are from small samples and are inexact.

<http://statewidedatabase.org/>

Background: 2-District Plan

Rejected by voters
(Measure A)

City of Santa Clara Council District Plan
Recommended by the Ad-Hoc Advisory
Districting Committee April 12, 2018

Boundaries follow centerlines of
El Camino Real and Lawrence Expressway.

LEGEND

 Recommended Plan

 Park

 School

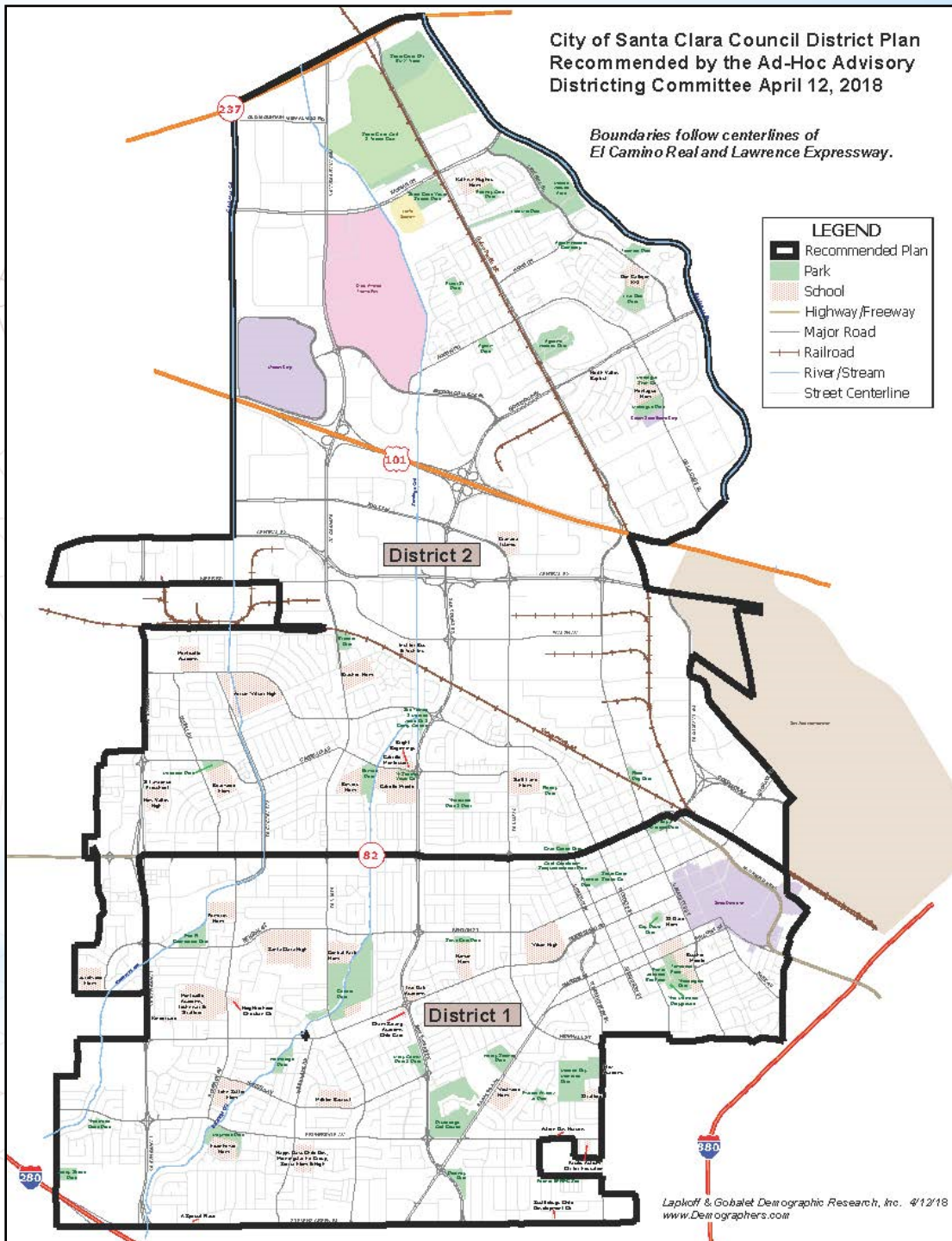
 Highway/Freeway

 Major Road

 Railroad

 River/Stream

 Street Centerline

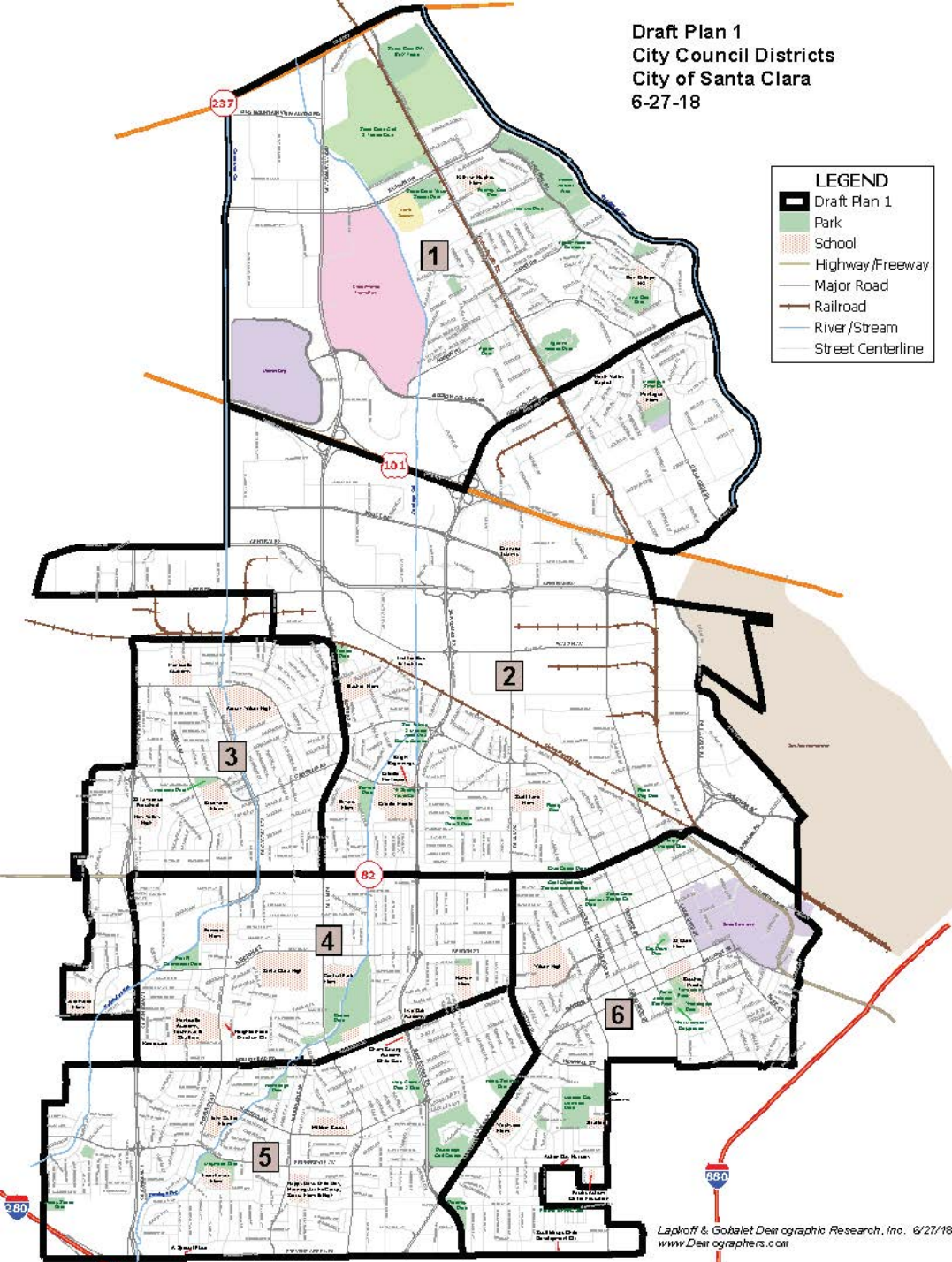


Draft Plans

Draft Plans 1, 2, 3:

- Each has 6 Council districts with (relatively) equal 2010 total populations
- All three plans use the May 8, 2018, 2-district plan boundary (mostly following El Camino Real)
- Plans built from Census blocks aggregated to construct Pieces
- Boundaries are major thoroughfares, when possible

In all three plans, Districts 3 and 4 have the smallest populations to take into account estimated post-2017 population growth from new housing.



Draft Plan 1

6 Council Districts

Note boundary between D1 and D2 (in the north) – Draft Plan 2 shows a different possibility

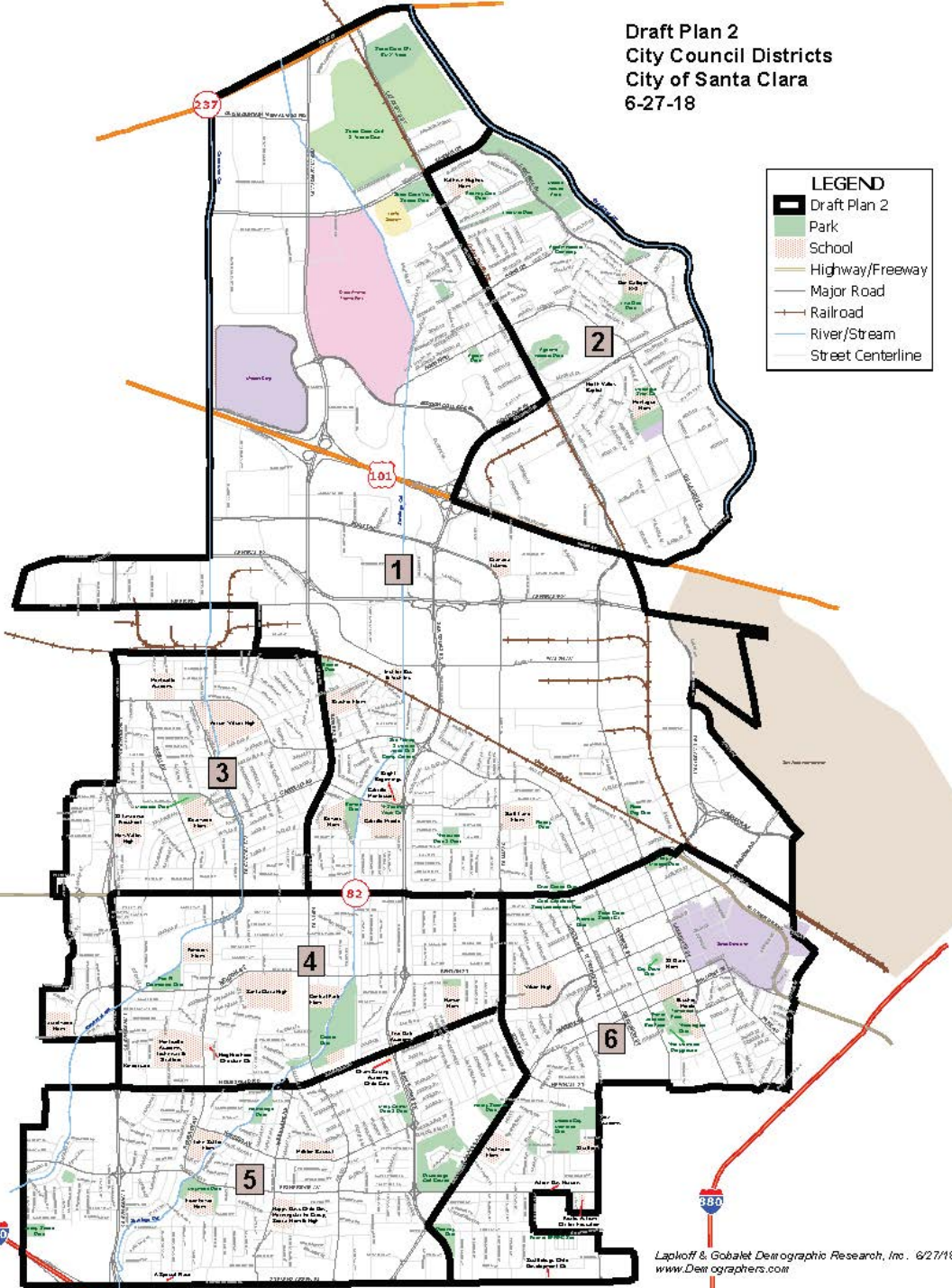
Draft Plan 1 data

Plan deviation = 7.5%

Draft Plan 1											
6 Council Districts											
District	Census 2010 total population	Deviation (ideal district pop. = 19,411)	% Deviation	NH Asian	NH White	Hispanic origin	NH Black	NH Native American AK native	NH Hawaiian Pacific Islander	NH Other race	NH Other mixed race
1	19,271	-140	-0.7%	11,811	4,221	2,213	591	41	72	83	239
2	20,070	659	3.4%	6,877	5,779	6,125	690	89	223	53	234
3	18,614	-797	-4.1%	7,811	5,815	4,005	404	99	160	110	210
4	18,678	-733	-3.8%	7,542	6,577	3,610	536	85	84	66	178
5	19,874	463	2.4%	7,861	8,897	2,386	393	63	74	48	152
6	19,961	550	2.8%	3,779	10,737	4,250	720	115	132	60	168
Total	116,468	1,456	7.5%	45,681	42,026	22,589	3,334	492	745	420	1,181
Citizen Voting Age Population (CVAP) - estimated 2012-2016											
District	est total CVAP 2012-16			est NH Asian CVAP 2012-16	est NH White CVAP 2012-16	est Hispanic CVAP 2012-16	est NH Other CVAP 2012-16	Row Total			
1	9,707			51%	35%	11%	4%	100%			
2	10,823			27%	42%	27%	4%	100%			
3	10,018			33%	46%	19%	2%	100%			
4	10,567			31%	50%	17%	3%	100%			
5	11,495			27%	60%	10%	2%	100%			
6	13,427			13%	67%	17%	4%	100%			
Total	66,036			29%	51%	17%	3%	100%			

Deviation when taking into account the estimated post-2010 population growth from new housing = 11.2%

Draft Plan 2
City Council Districts
City of Santa Clara
6-27-18



Draft Plan 2

6 Council Districts

**Different D1-D2
boundary,
otherwise the
same as Draft
Plan 1**

Draft Plan 2 data

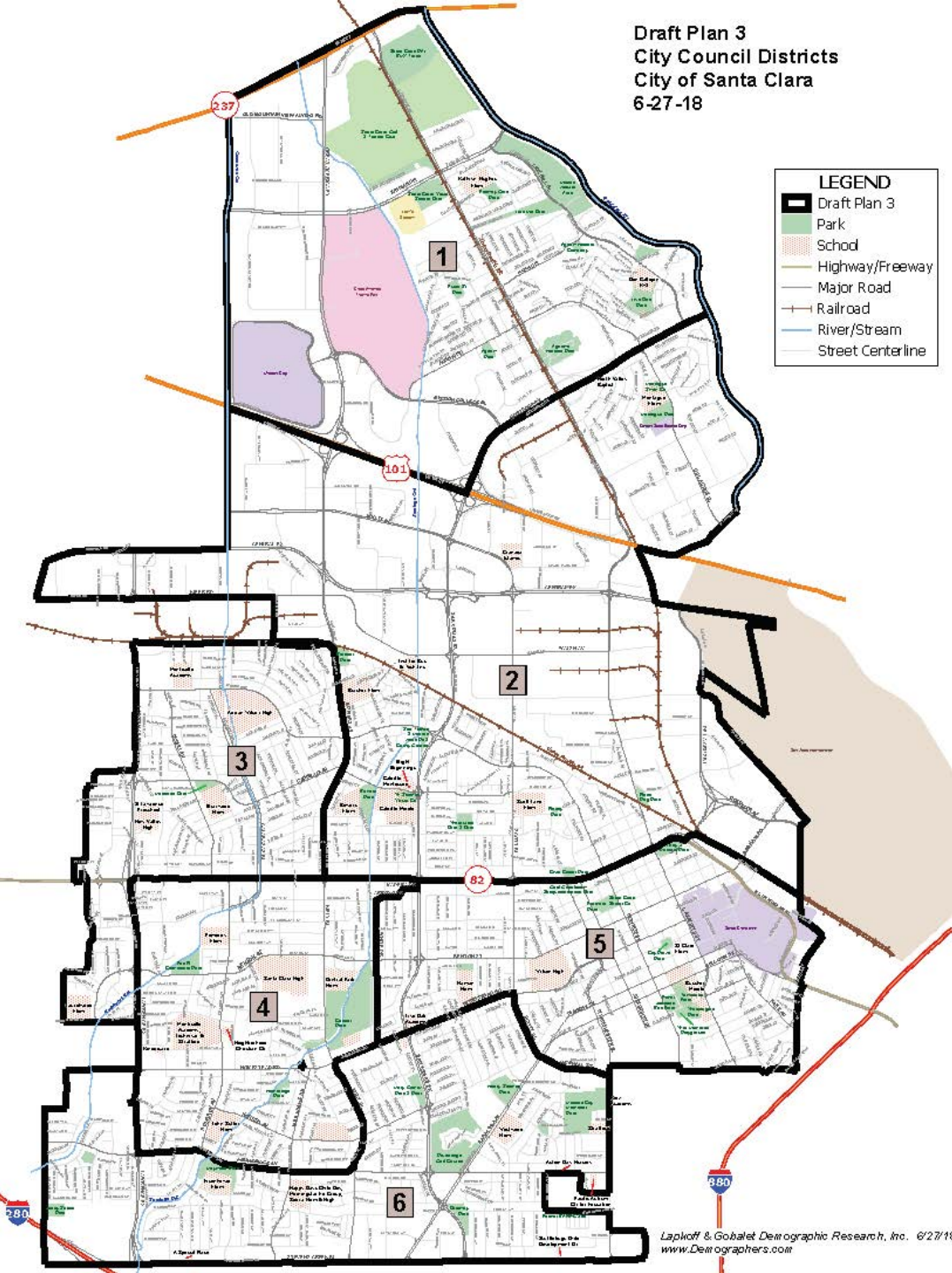
Plan deviation = 8.8%

Draft Plan 2											
6 Council Districts											
District	Census 2010 total population	Deviation (ideal district pop. = 19,411)	% Deviation	NH Asian	NH White	Hispanic origin	NH Black	NH Native American AK native	NH Hawaiian Pacific Islander	NH Other race	NH Other mixed race
1	20,314	903	4.7%	7,660	5,650	5,828	660	75	174	55	212
2	19,027	-384	-2.0%	11,028	4,350	2,510	621	55	121	81	261
3	18,614	-797	-4.1%	7,811	5,815	4,005	404	99	160	110	210
4	18,678	-733	-3.8%	7,542	6,577	3,610	536	85	84	66	178
5	19,874	463	2.4%	7,861	8,897	2,386	393	63	74	48	152
6	19,961	550	2.8%	3,779	10,737	4,250	720	115	132	60	168
Total	116,468	1,700	8.8%	45,681	42,026	22,589	3,334	492	745	420	1,181
Citizen Voting Age Population (CVAP) - estimated 2012-2016											
District	est total CVAP 2012-16			est NH Asian CVAP 2012-16	est NH White CVAP 2012-16	est Hispanic CVAP 2012-16	est NH Other CVAP 2012-16	Row Total			
1	10,768			30%	41%	26%	4%	100%			
2	9,762			48%	36%	12%	4%	100%			
3	10,018			33%	46%	19%	2%	100%			
4	10,567			31%	50%	17%	3%	100%			
5	11,495			27%	60%	10%	2%	100%			
6	13,427			13%	67%	17%	4%	100%			
Total	66,036			29%	51%	17%	3%	100%			

Deviation when taking into account the estimated post-2010 population growth from new housing = 12.5%

Draft Plan 3

6 Council Districts



Nextdoor neighborhood boundaries used to the extent possible

Same D1 and D2 as Draft Plan 1

D4, D5, and D6 from the differ from the other plans

Draft Plan 3 data

Plan deviation = 8.8%

Draft Plan 3											
6 Council Districts											
District	Census 2010 total population	Deviation (ideal district pop. = 19,411)	% Deviation	NH Asian	NH White	Hispanic origin	NH Black	NH Native American AK native	NH Hawaiian Pacific Islander	NH Other race	NH Other mixed race
1	19,271	-140	-0.7%	11,811	4,221	2,213	591	41	72	83	239
2	20,070	659	3.4%	6,877	5,779	6,125	690	89	223	53	234
3	18,614	-797	-4.1%	7,811	5,815	4,005	404	99	160	110	210
4	18,649	-762	-3.9%	7,719	6,819	3,205	503	87	81	66	169
5	19,535	124	0.6%	3,917	10,137	4,343	652	119	130	64	173
6	20,329	918	4.7%	7,546	9,255	2,698	494	57	79	44	156
Total	116,468	1,715	8.8%	45,681	42,026	22,589	3,334	492	745	420	1,181
Citizen Voting Age Population (CVAP) - estimated 2012-2016											
District	est total CVAP 2012-16			est NH Asian CVAP 2012-16	est NH White CVAP 2012-16	est Hispanic CVAP 2012-16	est NH Other CVAP 2012-16	Row Total			
1	9,707			51%	35%	11%	4%	100%			
2	10,823			27%	42%	27%	4%	100%			
3	10,018			33%	46%	19%	2%	100%			
4	10,527			31%	51%	15%	3%	100%			
5	12,980			14%	65%	18%	3%	100%			
6	11,982			25%	61%	11%	3%	100%			
Total	66,036			29%	51%	17%	3%	100%			

Deviation when taking into account the estimated post-2010 population growth from new housing = 12.0%

Pieces are Building blocks for Council Districts

- Members of the public who wish to design Council Districts may use the Excel file posted on the City's website ("[Calculator for 6-District plans with Pieces map 070318.xlsx](#)"). It is based on Pieces data (for 36 subareas of the City). The Pieces can be modified upon request. The Excel file provides automatic calculations of a draft plan's deviation and CVAP characteristics.
 - The "Pieces" were drawn while taking into account:
 - Major thoroughfares
 - Neighborhoods
 - Communities of interest
 - Election precinct boundaries
 - Santa Clara Unified School District's elementary attendance areas
 - More about "Pieces"
 - They do *not* have equal populations: they are intended to be useful for building Council districts
 - Boundaries can be adjusted--subdivided or revised--if it seems useful to do so
- An Excel file containing *Census block-level data* will be posted on the City's website. There were nearly 1,900 Census blocks in the City in 2010, too many for most people to use to build plans. This database could be used by those with GIS capability.

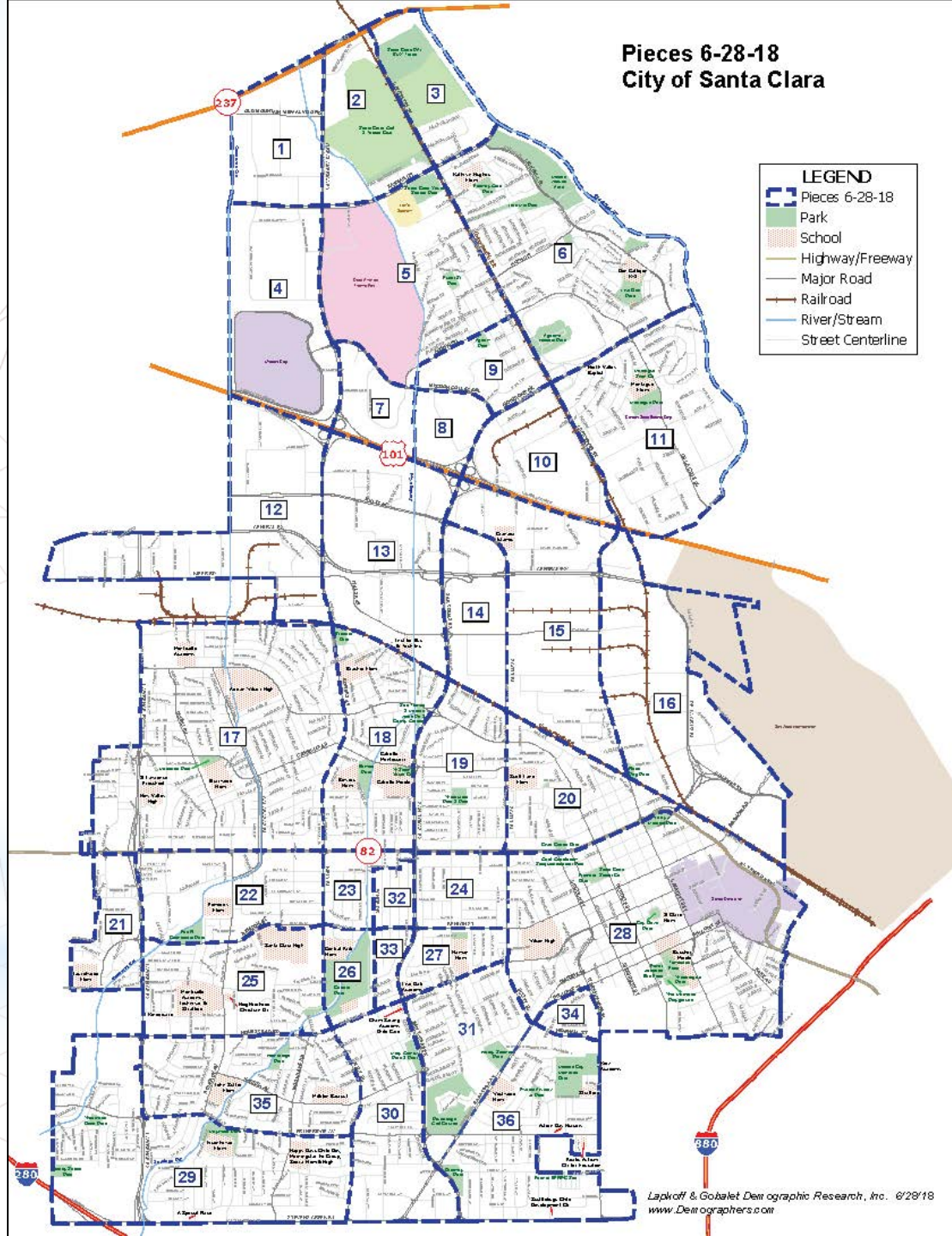
See background information, maps, data, and Draft Plans on the City's website.

City of Santa Clara subareas / “pieces” can be combined to create Council district scenarios – June 28 version

These subareas were
created by the city’s
demographer.

They can be modified
(subdivided or revised) if it
seems useful to do so.

An Excel file for use in
connection with this map
will be posted on the City’s
website.



Comments /Questions?

Jeanne Gobalet, Ph.D.

<http://santaclaraca.gov/residents/court-ordered-council-districting-process>

**Lapkoff & Gobalet
Demographic Research, Inc.**